



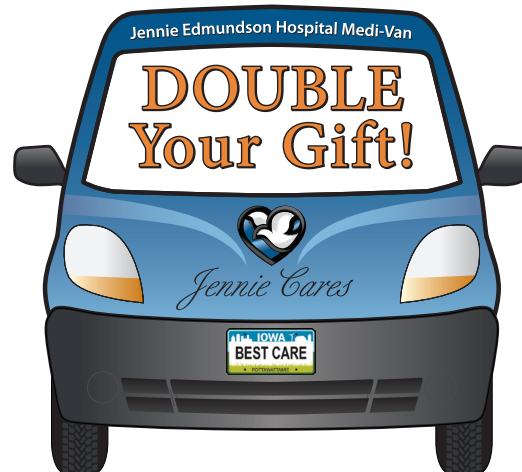
Gift Shop's Generous Matching Gift Fuels Medi-Van Campaign

Each year, the Jennie Edmundson Foundation works to secure funding to help our neighbors overcome barriers to health care. Our current fundraising campaign addresses one of our most important community outreach efforts: the Medi-Bus Patient Transportation program.

Making weekly trips to the hospital for physical therapy or daily trips for radiation oncology can be extremely difficult for patients who are elderly, low-income, or coping with chronic illness. Patients who are recovering from surgery, wheelchair-bound, or ill from chemotherapy are not good candidates for public transportation.

Thanks to generous donations, we have been able to solve this problem for some of our most vulnerable patients through a program that is 100% funded through philanthropy. We are the **ONLY** hospital in the metro area that offers this vital service free of charge for our patients – thanks to donors like YOU!

Wear and tear on vehicles is unavoidable and our Medi-Bus is no exception. It has been used for over nine years, logging hundreds of thousands of miles while transporting more than 27,000 patients. The time has come to replace the bus. With this goal in mind, the Jennie Edmundson Foundation has launched a \$100,000 campaign to replace the current large, multi-passenger vehicle with a handicapped-accessible Medi-Van and fund its first year of operation.



This fundraising campaign's success will allow us to continue serving thousands of low-income individuals and seniors for many years to come.

The new van will continue to provide individualized service, picking up one patient at a time. It will be more fuel-efficient than our current Medi-Bus and compact enough to be parked in the hospital's garage for greater security. The success of this year's fundraising campaign will allow us to continue serving thousands of low-income individuals and seniors for many years to come.

The Medi-Bus is vitally important to every patient who uses it. Just ask Kathy Halverson-Rigatuso.

Kathy became a volunteer at Methodist Jennie Edmundson Hospital in 2012, not long after she was diagnosed with chronic myeloid leukemia, a condition that she continues to battle. Kathy's mother, Helen Glynn, was a volunteer at the hospital for more than 30 years until she passed away from pancreatic cancer in 2018 at age 95.



Helen Glynn



Kathy Halverson-Rigatuso

Kathy says nothing ever prevented her mother from getting to the hospital, not even a major snowstorm several years ago that nearly shut down the city. But when Kathy underwent knee surgery at age 75, she was unable to drive to the hospital for her cancer treatments or her physical therapy sessions. Instead, she relied on the Medi-Bus.

(Continued on page 7)

Tara Slevin | We Are Grateful for Your Generosity



*Tara Slevin,
Vice President of
Development and
Volunteer Services*

Hello Friends!

As we celebrate the holidays with family and friends, we are deeply grateful for the generosity and commitment of our donors. Gifts from community residents and employees of Methodist Jennie Edmundson Hospital make it possible for us to deliver the state-of-the-art medical care our patients deserve.

In fact, philanthropy is where it all began. Since our inception in 1907, access to health care has been at the heart of what we do and who we are at Methodist Jennie Edmundson. Motivated by the need for high-quality health care in Council Bluffs and surrounding communities, James D. Edmundson made a significant gift in honor of his wife Jennie. Today his legacy continues – thanks in part to the many people who share their time,

talents, and treasures to continue our mission of caring for those who cannot care for themselves. With each gift you make, you become our partner in sustaining this important legacy. As you read the stories in this issue, you will see that the Edmundson's legacy of caring continues through each of you.

As we look ahead to 2020, we can be sure that philanthropy will continue to play a critical role. Gifts of all sizes enhance our ability to provide compassionate patient care, install advanced equipment, educate staff, and continue to break down barriers to health care access for some of our most vulnerable neighbors.

Thank you for supporting our mission. If you would like more information, please email me at tara.slevin@nmhs.org or call 712-396-6040.

Caring for Our Communities Strives to Meet a Growing Need

Caring for Our Communities (CFOC) is a well-established program led by Methodist Jennie Edmundson Hospital that helps people with complex and often chronic diseases who don't have insurance, are under-insured, have behavioral health issues, cannot afford or simply don't have a primary care doctor.

Many of these people come to the Methodist Jennie Edmundson Hospital Emergency Department for care, but the ED isn't always the best place to serve their recurrent needs. CFOC helps these people find appropriate health care, access existing community resources, and obtain health-related education and affordable medications.

"The Caring for Our Communities program is the right thing to do," says Methodist Jennie Edmundson Hospital President & CEO Steve

Baumert. "It connects individuals who require care but have difficulty navigating the health care system to the right resources."

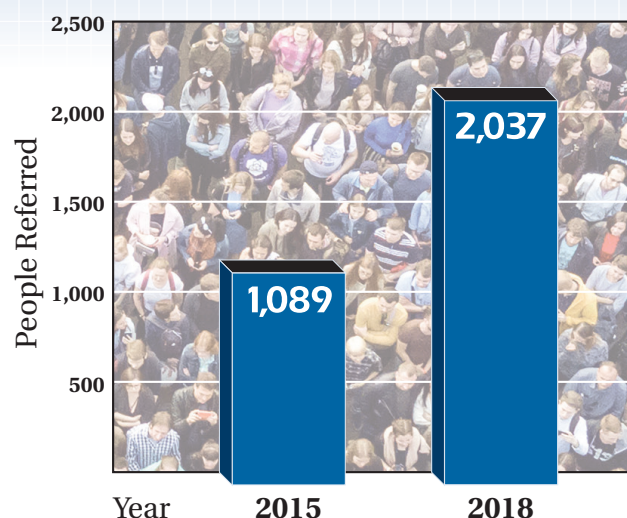
CFOC is located within Methodist Jennie Edmundson and is available throughout southwest Iowa at no cost, thanks to the hospital and numerous donors.

Going forward, CFOC is expanding its services by moving from a hospital-based to a community-based initiative by building upon the partnerships that exist with community first responders and encouraging them to refer individuals they frequently encounter.

With the addition of a Community Health Navigator in 2020, those referred individuals have an advocate to help determine how to better address their needs, says CFOC founding member

(Continued on page 3)

The Need Has Nearly Doubled



Growing Need (continued from page 2)

Sherrie McDonald, RN, director of consumer services, Connections Area Agency on Aging.

The Community Health Navigator will contact the referred individual within two business days. If the referred person approves, the Community Health Navigator will assess the need and connect the person with appropriate services. Community Health Navigators will also contact the referring entity and share whether the individual refused or accepted a visit.

Philanthropy is the cornerstone of CFOC. The people helped through Caring for Our Communities are often the most vulnerable, simply because they don't know where to turn. Thanks to the financial support we receive, CFOC can help them turn their lives around.

Each year, more than 30 key stakeholders and community partners take part in the CFOC effort to link under-resourced individuals with available local resources. Lead organizations include: Methodist Jennie Edmundson Hospital, The Jennie Edmundson Foundation, Connections Area Agency on Aging, Heartland Family Service, Pottawattamie County Public Health Department, Horizon Behavioral Health Agency, Iowa Legal Aid, Methodist Physicians Clinic and All Care (Community) Health Center.

Funds are needed for community health and behavioral health coaches, as well as to provide immediate financial assistance to participants.

"Jennie Edmundson has played a lead role in advancing the program's vision," Baumert says. "CFOC is working with patients who have some very significant barriers in their lives that we are helping to overcome," he says.

McDonald says the hospital and the Jennie Edmundson Foundation have been instrumental in furthering the program's goals. "Without that support, I don't think we'd be such a front runner that other organizations contact us wanting to know how they can replicate our model," she says.

"The program is working for those who need it most," Baumert says. "To take it to the next level requires funding and community education."

CFOC also matches people with community health and behavioral health "coaches" who help them understand the health care exchange so program enrollees become more active, educated participants in their care.

Funds are needed to staff the roles of the community health and behavioral health coaches, and to enable CFOC to provide immediate financial assistance for transportation, medications, copays for primary care visits, behavioral health services, nutrition, along with durable medical equipment, home modifications such as wheelchair ramps, and utility assistance.

"Caring for Our Communities helps people who often don't know where to turn and points them in the right direction for the level of care they need," Baumert says.

For more information or to make a gift, call 712-396-6040 or visit jehfoundation.org. The Caring for Our Communities website (caringforourcommunities.com) also offers additional resources.



CANCER CARE

precisely where it's needed

JENNIE EDMUNDSON FOUNDATION CAPITAL CAMPAIGN



Thank You Donors! You Know Precisely How To Make a Difference

When you, a loved one, a friend or a neighbor are diagnosed with cancer, the best care is the kind that is delivered with skill and compassion and available close to home. You also want state-of-the-art equipment, technologies and therapies that can make your battle winnable.

The Jennie Edmundson Foundation is proud of our role in helping Methodist Jennie Edmundson Hospital bring comprehensive, integrated cancer care to southwest Iowa and eastern Nebraska.

At the end of 2014, the Foundation launched a \$5 million capital campaign to replace the aging linear accelerator used in radiation therapy at the Methodist Jennie Edmundson Cancer Center.

Thanks to the lead gifts from the Helmsley Foundation and Southwest Iowa Foundation along with 1,200 donors, in 2016 we were able to replace and install the newest version of the TrueBeam linear accelerator.

The TrueBeam linear accelerator offers radiation therapists the ability to deliver a more precise dose of radiation, targeting cancer cells while preserving healthy tissue. The purchase of the accelerator, construction of a new vault to house it, as well as other improvements to the center were made possible by the capital campaign's generous donors.

Because of the TrueBeam linear accelerator, the center offers revolutionary new treatments. Volumetric modulated arc therapy is a treatment

delivered as the machine arcs around the patient, while stereotactic body radiation therapy delivers extremely precise, very intense doses of radiation to cancer cells. It is particularly effective in treating patients with small lung cancer tumors who may be poor candidates for surgery.

The ability to offer these treatments is important to patients who formerly had to travel to Omaha or elsewhere. Now, that high level of care and expertise is available right here in Council Bluffs. The addition of the TrueBeam linear accelerator was an exciting day for everyone at the hospital and cancer center.



Amber Williams (center) is pictured with Angie Watts and Jess Backhaus, two of the radiation oncology therapists that helped in her recovery.

Among the thousands of patients who have benefited from the TrueBeam linear accelerator is Amber Williams, BSN, RNC-OB, C-EFM.

Williams is a labor and delivery and day shift charge nurse at Methodist Jennie Edmundson Hospital. In November 2015, she discovered



Amber Williams, now cancer free, with her family

a lump in her right breast that proved to be Stage II cancer. With the tumor too large for a lumpectomy, she then had a mastectomy, followed by 16 rounds of chemotherapy and 29 rounds of radiation treatments. The TrueBeam linear accelerator was new to the cancer center the month she began her radiation treatments.

“The TrueBeam enabled them to target my cancer cells more clearly,” Williams said. “It was so amazing that they got the new machine and I was able to be treated with it. I was able to have radiation over lunch and get right back to work.

“For Jennie to have the machine I needed was a huge factor in my recovery.”

The cancer center is home to many medical specialists and leading-edge cancer treatments and technologies – and its comprehensive care now reaches throughout southwest Iowa and into eastern Nebraska. Through October, the radiation oncology department delivered 2,931 treatments in 2019, said Director of Oncology Services Michelle Kaufman, MS, R.T. (R,T), and more than 12,000 treatments since 2016.

Kaufman said a fifth radiation oncology physician has allowed services to grow. “This ensures that our patients receive consistent care across the Methodist Health System,” she said.

The high quality of care at the cancer center has earned national accreditation from the Commission on Cancer of the American College of Surgeons. Only a fraction of the nation’s cancer centers have achieved this notable accomplishment.

In addition, the center offers:

- A nationally-accredited Breast Health Center
- Medical Oncology/Chemotherapy, through a longstanding partnership with Heartland Oncology & Hematology
- Radiation Oncology
- Head and Neck Clinic
- Lung Clinic
- Colorectal Clinic
- Interventional radiology
- Full-service, on-site pathology
- Cancer research and trial studies
- Nutrition services
- Rehabilitation services
- A Family Resource Educational Center
- Genetic counseling

“Having these services available close to home helps to lessen the anxiety for our cancer patients, and that helps with healing,” Kaufman said.

Williams said she believes the TrueBeam is one of the reasons she has no sign of cancer today. “As far as the people who made that possible, I don’t think there are words to truly thank them enough,” she said. “Not just for me, but for all the cancer patients at Jennie. Their donations are giving people a better chance at life.”

None of this would be possible without the support of the community, and the employees and volunteers at Methodist Jennie Edmundson Hospital. The fact that the cancer center employees participated wholeheartedly in the campaign shows how much we believe that our patients deserve the best treatments available.

On behalf of the Foundation, the cancer center, and most of all, the patients, we want to celebrate our success as we near the end of our five-year capital campaign pledge period – and thank the people and organizations that made it happen: **OUR DONORS!**

Upcoming 2020 Events | Mark Your Calendars



Pink Out

Numerous Opportunities to Have Fun & Show Your Support Too!

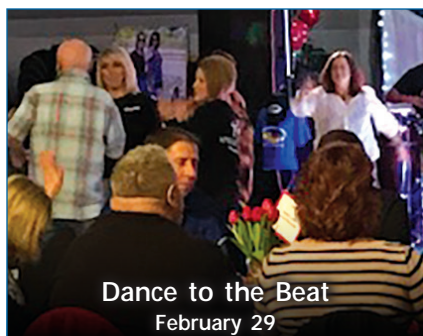
The Jennie Edmundson Foundation is honored to be a part of a community that cares!

Dance to the Beat, February 29: Recognizes people who impact lives through heart health and cardiac awareness and supports our uninsured and under-insured cardiac patients.

Wheels of Courage, June 27:
Car show to raise funds for the Spirit of Courage Charitable Patient Care Fund.

Spirit of Courage, July 31- August 2: Events include a golf tournament, dinner and gala, and Texas Hold 'Em poker tournament.

Pink Out, October: provides the community with education and awareness of breast cancer. Funds raised benefit breast health services provided by Methodist Jennie Edmundson.



Dance to the Beat
February 29



Wheels of Courage Car Show
June 27



Pink Out: October
Council Bluffs: Oct. 9
Glenwood: Oct. 15 Malvern: Oct. 16



Spirit of Courage: Honorees, Celebrities & More
Golf Tournament: August 1 Dinner & Gala: August 1 Texas Hold Em: August 2

Medi-Van Campaign (continued from page 1)

“My son and grandsons live in Colorado,” says Kathy, who lost her husband to cancer in 2002. “I don’t like to impose on friends and neighbors to drive me over and over. The Medi-Bus was perfect for me.”

She rode the Medi-Bus three days a week to obtain physical therapy at the hospital. “With the Medi-Bus, I knew I had a reliable source of transportation and would not need to go to a rehab facility to recover.”

Kathy says many older adults cannot afford to take a taxi several times a week, and they are physically unable to board a city bus. “The Medi-Bus is a blessing for them,” she remarks.

For more than four decades, Methodist Jennie Edmundson’s Medi-Bus has provided a coordinated transportation program that strives to meet patients’ unique needs at no charge. Our drivers are compassionate and known for going the extra mile.

To continue providing this crucial service for thousands of older adults and low-income individuals, we must replace the bus in 2020. **Generosity is our only funding source!**

The Foundation was thrilled when a long-time supporter of the Medi-Bus program – our volunteer-run Gift Shop – stepped forward to offer a dollar-for-dollar match of donations up to \$50,000!



We are the ONLY hospital in the metro area to offers free transportation for our patients – thanks to donors like YOU!

The Methodist Jennie Edmundson Hospital launched its employee giving campaign on November 8th with more than 64% employee participation so far. On December 1st, we invited our board of directors and physicians to make contributions as we began our community campaign.

Can We Count on Your Help?

To provide a donation to the Medi-Van Patient Transportation fundraising campaign, please call 712-396-6040 or donate on-line at <http://www.jehfoundation.org/make-a-gift>

Jennie Edmundson Foundation Board of Directors	Jennie Edmundson Foundation and Volunteer Services Staff															
<p>President and CEO: Steven Baumert</p> <p>Chairman: Pat Andersen</p> <p>Vice Chairman: Scott Hartman</p> <p>Secretary/Treasurer: Janet Whitson</p> <p>Directors:</p> <table><tr><td>Dr. Pat Ahrens</td><td>Mikala Holtz</td><td>John Paul</td></tr><tr><td>Jen Carlson</td><td>Diane Hughes</td><td>Kathy Tisher</td></tr><tr><td>Grant Dean</td><td>Edward Lynn</td><td>Barb Walsh</td></tr><tr><td>Tami Doll</td><td>Kate McGann</td><td>Teri Wilson</td></tr><tr><td>Leisha Hammer</td><td></td><td></td></tr></table>	Dr. Pat Ahrens	Mikala Holtz	John Paul	Jen Carlson	Diane Hughes	Kathy Tisher	Grant Dean	Edward Lynn	Barb Walsh	Tami Doll	Kate McGann	Teri Wilson	Leisha Hammer			<p>Vice President: Tara Slevin</p> <p>Director: Jill Killion</p> <p>Director of Development: Katie Kyker</p> <p>Senior Administrative Assistant: Robin Spitznagle</p> <p>Volunteer Coordinator: Courtney Killion</p> <p>Gift Shop Manager & Foundation Assistant: Teresa Slevin</p> <p>Foundation Project Coordinator: Sandy Westphal</p>
Dr. Pat Ahrens	Mikala Holtz	John Paul														
Jen Carlson	Diane Hughes	Kathy Tisher														
Grant Dean	Edward Lynn	Barb Walsh														
Tami Doll	Kate McGann	Teri Wilson														
Leisha Hammer																



**JENNIE EDMUNDSON
FOUNDATION**

933 E. Pierce Street • Council Bluffs, IA 51503

jehfoundation.org • 712-396-6040

PRSRT STD
U.S. POSTAGE
PAID
OMAHA, NE
PERMIT NO. 983

There Are Many Ways to Make a Year End Gift

IRA Charitable Rollover

If you are age 70½ or older, you can make a gifts to The Jennie Edmundson Foundation directly from your IRA. It does not result in a taxable distribution to you, and helps satisfy your required minimum annual distribution.

There are many ways to support our mission:

- Give in memory or honor of a loved one
- Make a donation on-line or mail in a check
- Make a tax-free gift from your IRA
- Transfer stocks or securities
- Ask your employer to match your gift

We are grateful for our donors, volunteers, and the exceptional medical and clinical staff who make Methodist Jennie Edmundson Hospital an important asset to our community.

As 2019 draws to a close, we want you to know the Jennie Foundation is here for your support. Your donations have provided vital funding for patient and family programs such as Caring for Our Communities, the charitable patient care funds for the Spirit of Courage cancer center and cardiovascular unit, improvements in our behavioral health unit, a new surgical robot, nursing scholarships, and much more.

Giving to the Jennie Edmundson Foundation changes lives by ensuring that exceptional and compassionate care will continue to be available to all residents of southwest Iowa.

With every dollar donated, you make a difference in the lives of countless patients and families impacted by Methodist Jennie Edmundson Hospital. As you finalize your end-of-year giving, thank you for considering a gift to the Jennie Edmundson Foundation.